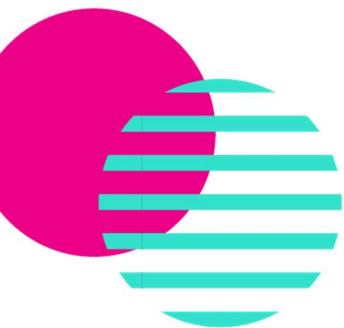




Course Specification

Cut Off Saws
(Petrol Only)

Inc. Abrasive Wheels



Assured Course Specification

Introduction

NOCN is a market-leading awarding organisation that has been providing qualifications, assured short courses, various courses for a wide range of centres, including FE colleges and training providers, for 30 years both in the UK and internationally.

We work with centres to deliver a high quality and flexible service for learners to underpin our passionate belief in the power of education and its impact on communities and individuals.

We offer all the advantages of being with a national awarding organisation with a diverse portfolio of qualifications, alongside providing a personalised, bespoke, service to our centres and learners.

As an accredited Leader in Diversity, we are proud of our reputation as a provider of fully accessible, trusted, and flexible qualifications.

Course Title: - Cut Off Saws (Petrol Only) Inc. Abrasive Wheels

Duration: - 1 Day

Certificate Validity: -3 years

Overview

NOCN Group have produced this Assured Course in collaboration with Stihl – COS Training to promote health and safety awareness / best practice in Cut Off Saws (Petrol Only)

The course aims to provide individuals with the knowledge and understanding of the use of petrol cut off saws, including safe operations and practical use on differing materials. This course also includes Abrasive Wheels.

This course will benefit anyone in the construction or engineering industry required to use a cut off saw (petrol only).

The outline, structure and content of this course are assured by NOCN Group

Course Content / Objectives

By completing this course, delegates will be able to: -

- Managing the risks involved when operating cut off saws
- Learn safe handling of petrol and battery operated cut off saws.
- Understanding fuel management
- Understanding how cut off saws react when powered up and in use on differing materials
- Knowing which wheel type is suited to various tasks
- Practical handling of petrol cut off saws

Course Approval

Prior to advertising or delivering this Assured Course, organisations must first gain Centre Approval from NOCN as well as approval for each individual Assured Course.

For further information regarding gaining approval, contact:

NOCN Quality Assurance Team

assurance@nocn.org.uk <https://www.nocn.org.uk/what-we-do/siteright/>

If applicable, partner approval or licensing may also be required (e.g., British Woodworking Federation, Leica Geosystems, Select Lifting Academy).

Approval, Readiness, Delivery, and Certification Process

1. Gain NOCN SiteRight Centre Approval.
2. Register with NOCN to deliver the course: - Cut Off Saws (Petrol Only) Inc. Abrasive wheels
3. Download official course materials from vLearn
4. Deliver the course in line with approved requirements.
5. Claim delegate certificates using <https://quartzweb.nocn.org.uk/>.

Trainer Requirements

- Hold verifiable, current knowledge and experience relevant to Cut Off Saws (Petrol Only) Inc. abrasive wheels
- Hold or be working towards a recognised teaching, training, or assessor qualification.
- Maintain continuous professional development (CPD) records and an up-to-date CV.
- **MUST have sufficient and current** practical experience in the field.
- **MUST** have completed this course or at least an equivalent course.
- **Does NOT need to** complete a specific Train-the-Trainer or Authorised Trainer course approved by NOCN or partner organization, please refer to the Assured Course Quality Manual

Resource and Equipment Requirements

Requirement	Detail
Training Environment	Classroom, table, chairs, Open outdoor area suitable for using a cut of saw
Delivery	Presentation, projector,
Practical/Testing Equipment	Petrol Cut Off Saw/s, materials for cutting including slabs and concrete blocks.
PPE (if required)	Safety boots, goggles, gloves, ear defenders, Hi-Viz, Hard Hat (as a minimum).
Assessment Materials	Test paper per delegate

Course Delivery

Maximum number of delegates: - 8 to 10 max

Minimum Age: - 17+

Delivery method: Presentation with knowledge test (multi Choice Questions). Practical demonstration with Observed Tasks.

Official NOCN-assured resources must be used for all training sessions.

Centres must download the latest training materials before each delivery and securely destroy any surplus materials afterward.

Trainers must follow the official lesson plan and PowerPoint presentation to ensure delegates receive all required information.

Assessment

Assessment includes a combination of:

- Practical Assessment
- Multiple-Choice / Knowledge Test
- Course Completion
- Other
- Other

Centres must retain all candidate **assessment materials** for quality assurance purposes for **3 years** and candidate **registration details** for **7 years** (see Assured Course Quality Assurance Manual 5.11 and 5.12).

Quality Assurance

All Assured Courses must adhere to the Assured Course Quality Manual available from NOCN.

This includes:

- Trainer competence verification
- Internal quality assurance processes
- Retention and audit of learner evidence
- Use of approved course materials only

Additional Information Required by NOCN

Course Resources/Teaching Materials	
Presentation	
Scheme of Work/Lesson Plans	
Company Logo	
Any Special Requirements	
Other	

Accreditation: NOCN Assured Course

NOCN Contact: - assurance@nocn.org.uk onboarding@nocn.org.uk