



# Cskills Awards Test Platform Client Requirements

Published by  
Cskills Awards,  
Bircham Newton, King's Lynn  
Norfolk PE31 6RH

First published September 2010  
Revised May 2011, July 2012, May 2013, January 2014, May 2017, August 2017

© NOCN 2017

Cskills Awards has made every effort to ensure that the information contained within this publication is accurate. This pack has been prepared as a downloadable resource. It may be freely printed without further permission from Cskills Awards on the condition that it is used solely within the purchasing organisation and is not used for profit or gain.

# Contents

	Page
1. Supported browsers	4
2. Setting up your browser to use the Test Platform	5
2.1 Allow script-initiated windows without size or position constraints	5
2.2 Add to trusted sites	6
2.3 Enable session cookies/first party cookies	7
2.4 Check for newer versions of stored pages	8
2.5 Turn off pop-up blocker/set privacy to medium high	9
2.6 Printer settings – optional for best quality if printing results	10
2.7 Compatibility view settings	11
3. Client computer requirements	12

## **1. Supported browsers**

The Test Platform supports the use of the following web browsers:

- Internet Explorer 8
- Internet Explorer 9.

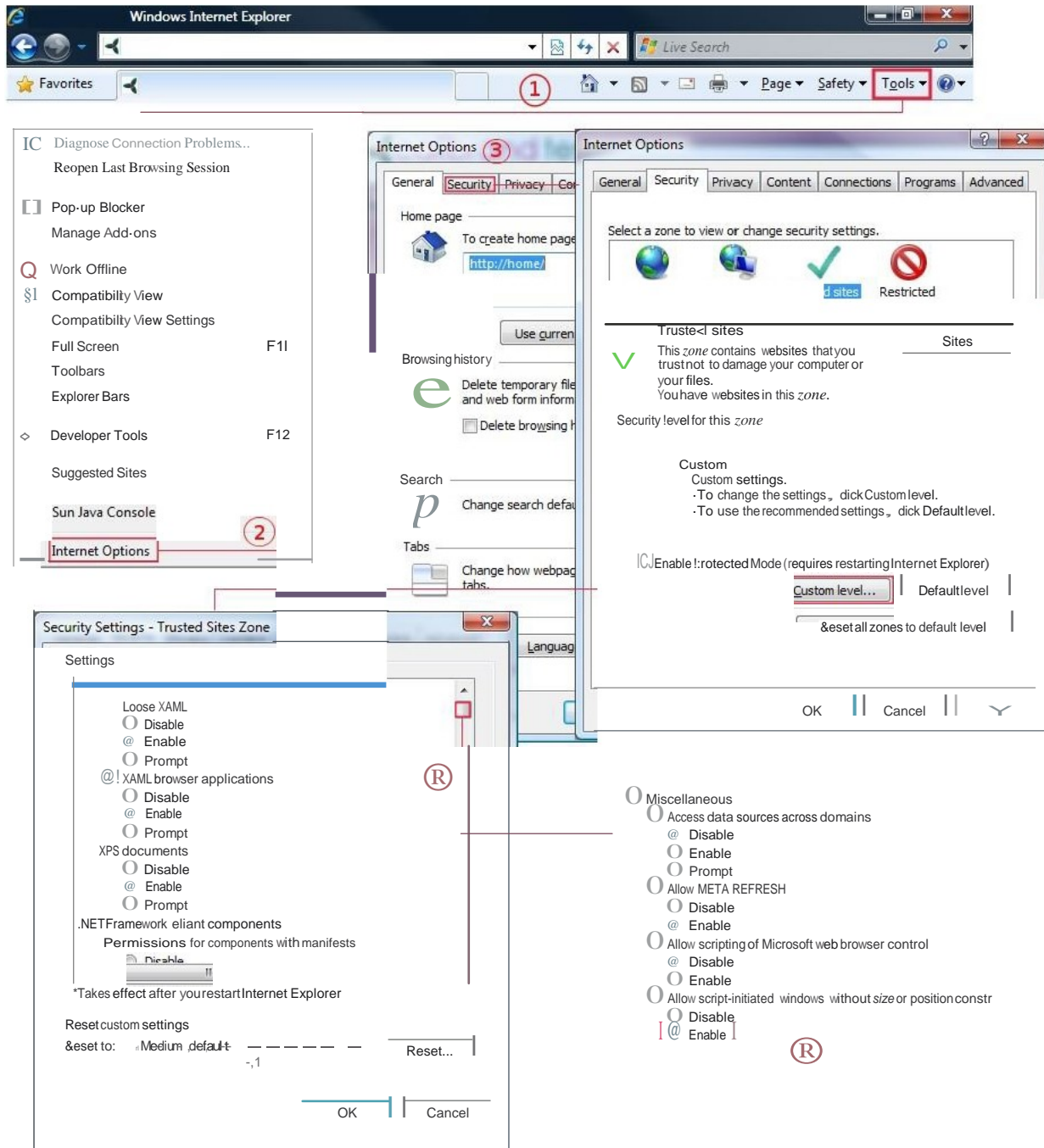
The following browsers are expected to work, but are not fully supported:

- Firefox 9 and later
- Google Chrome version 16 and later.

## 2. Setting up your browser to use the Test Platform

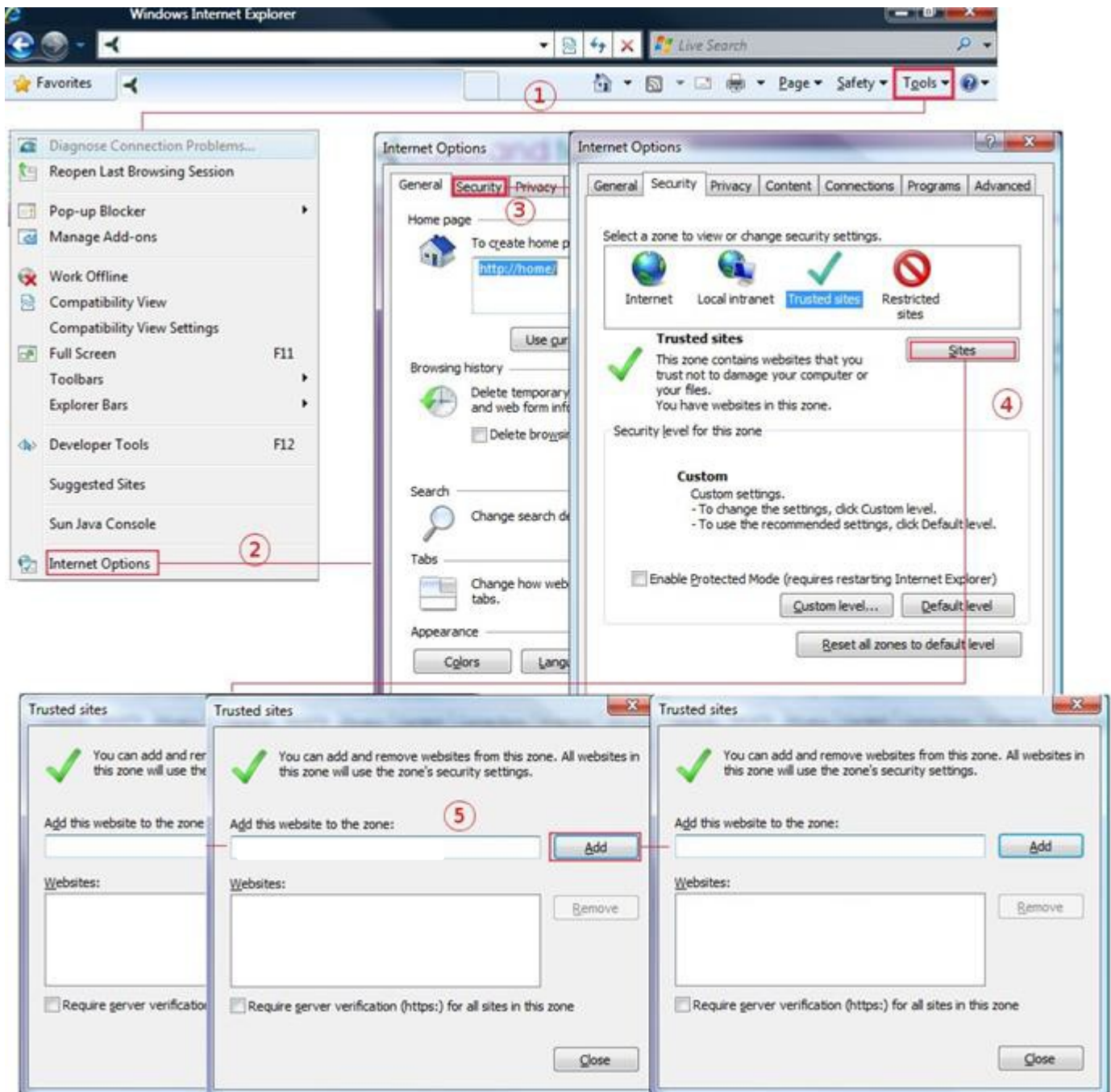
Before using the Test Platform, please ensure that the following changes have been made to your browser settings.

### 2.1 Allow script-initiated windows without size or position constraints



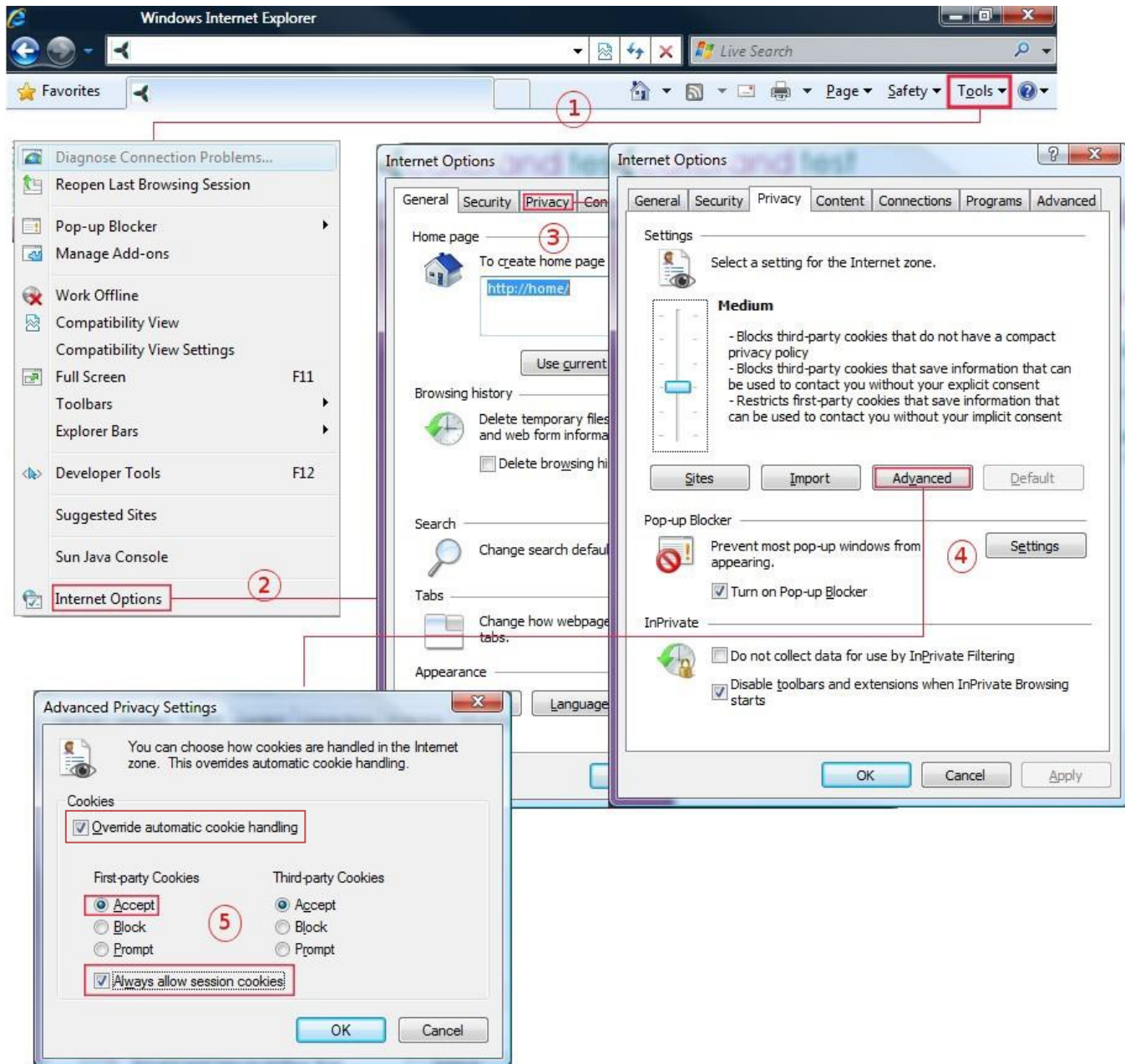
1. Select 'Tools'.
2. Select 'Internet Options'.
3. Select 'Security' tab.
4. Select 'Trusted sites' and then 'Custom level'.
5. Scroll down until you see 'Miscellaneous'.
6. Select 'Enable' under 'Allow script-initiated windows without size or position constraints'.

## 2.2 Add to trusted sites



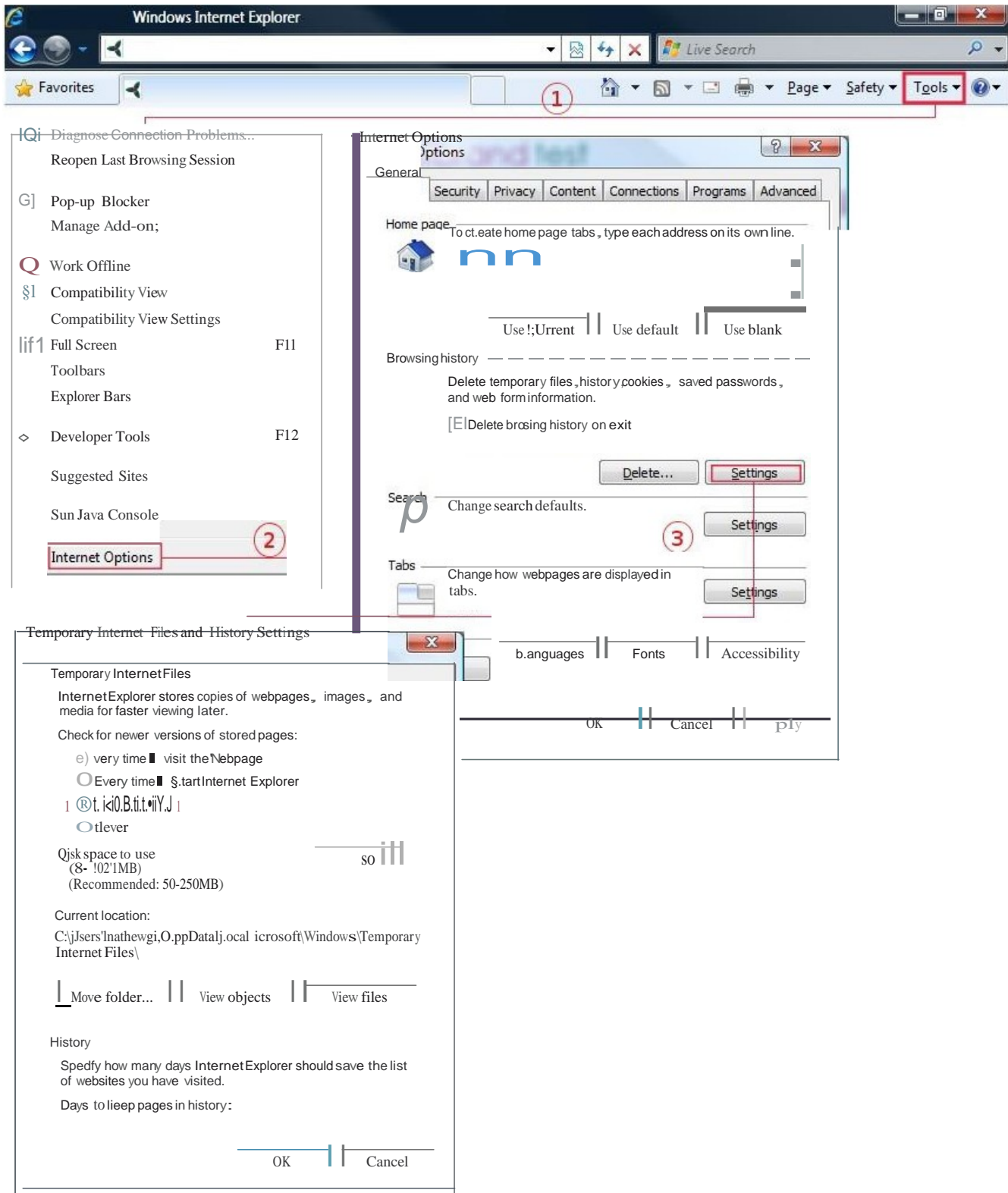
1. Select 'Tools'.
2. Select 'Internet Options'.
3. Select 'Security' tab.
4. Select 'Trusted Sites' and then 'Sites'.
5. Type the website address (<https://test.nocn-cskills.org.uk>) in the available textbox and select 'Add'.

## 2.3 Enable session cookies/first party cookies



1. Select 'Tools'.
2. Select 'Internet Options'.
3. Select 'Privacy' tab.
4. Select 'Advanced'.
5. Select 'Override automatic cookie handling'.
6. Select 'Accept' under 'First-party Cookies'.
7. Select 'Always allow session cookies'.

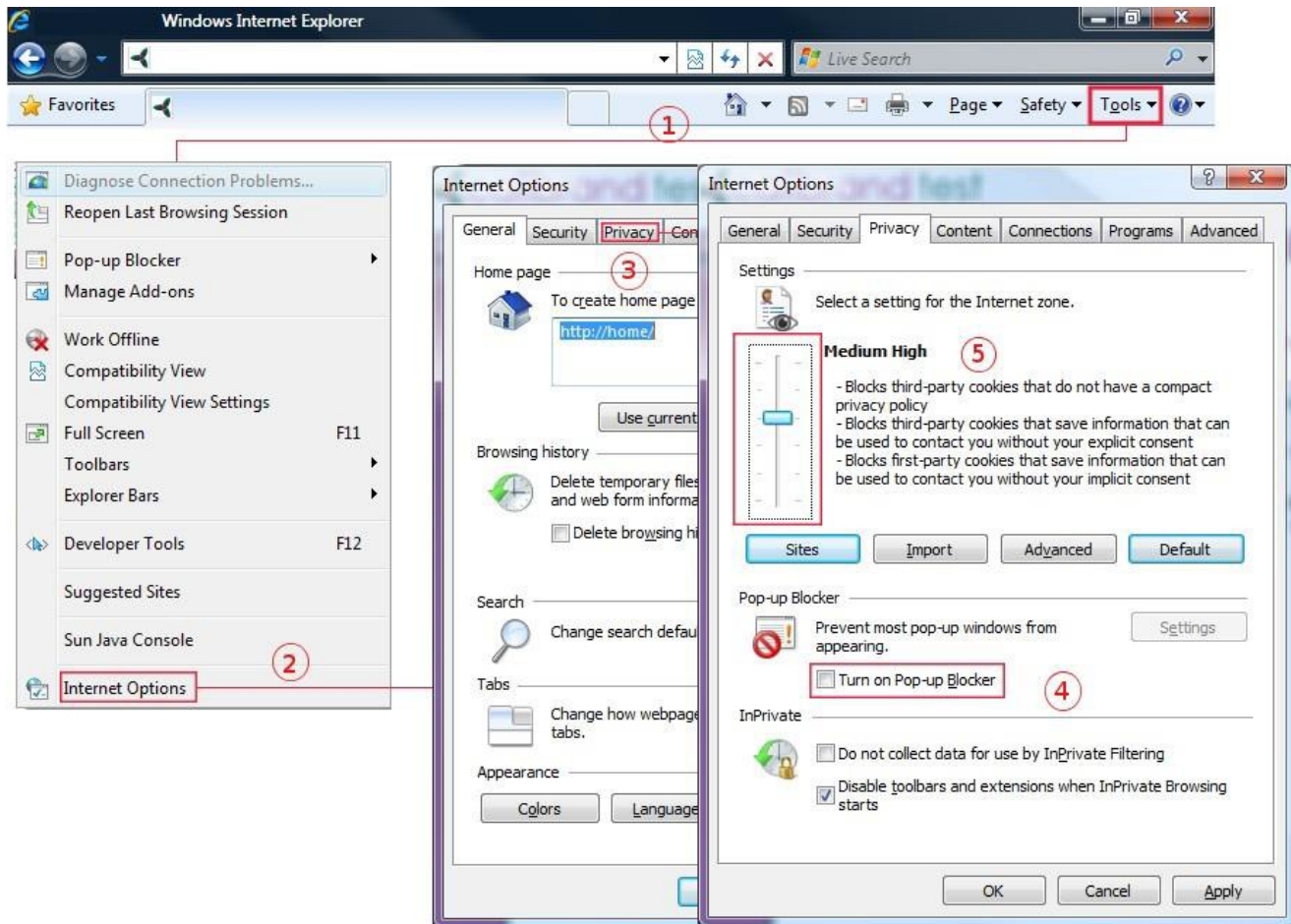
## 2.4 Check for newer versions of stored pages



1. Select 'Tools'.
2. Select 'Internet Options'.
3. Select 'Settings' under 'Browsing history'.
4. Select 'Automatically' under 'Check for newer versions of stored pages'.

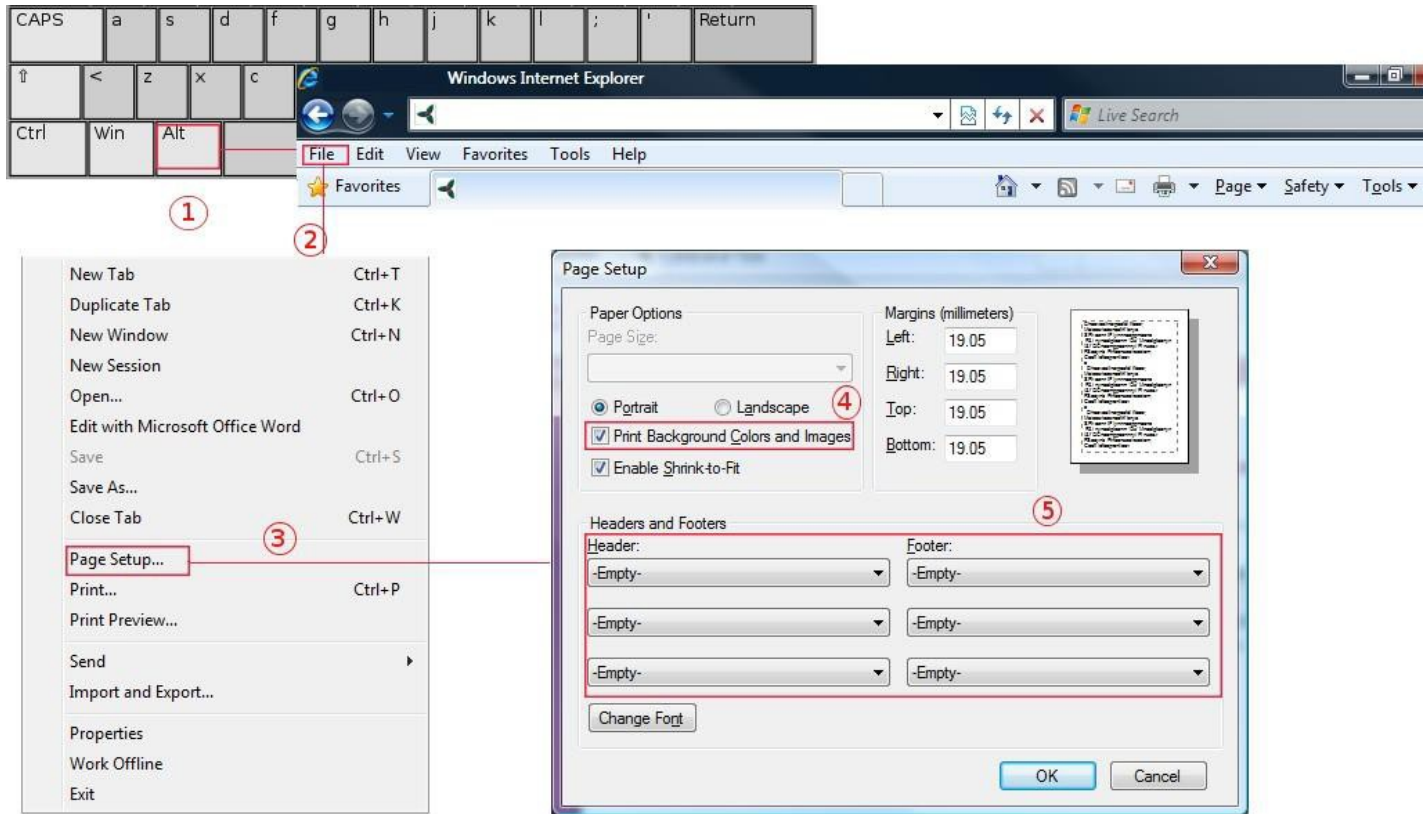


## 2.5 Turn off pop-up blocker/set privacy to medium high



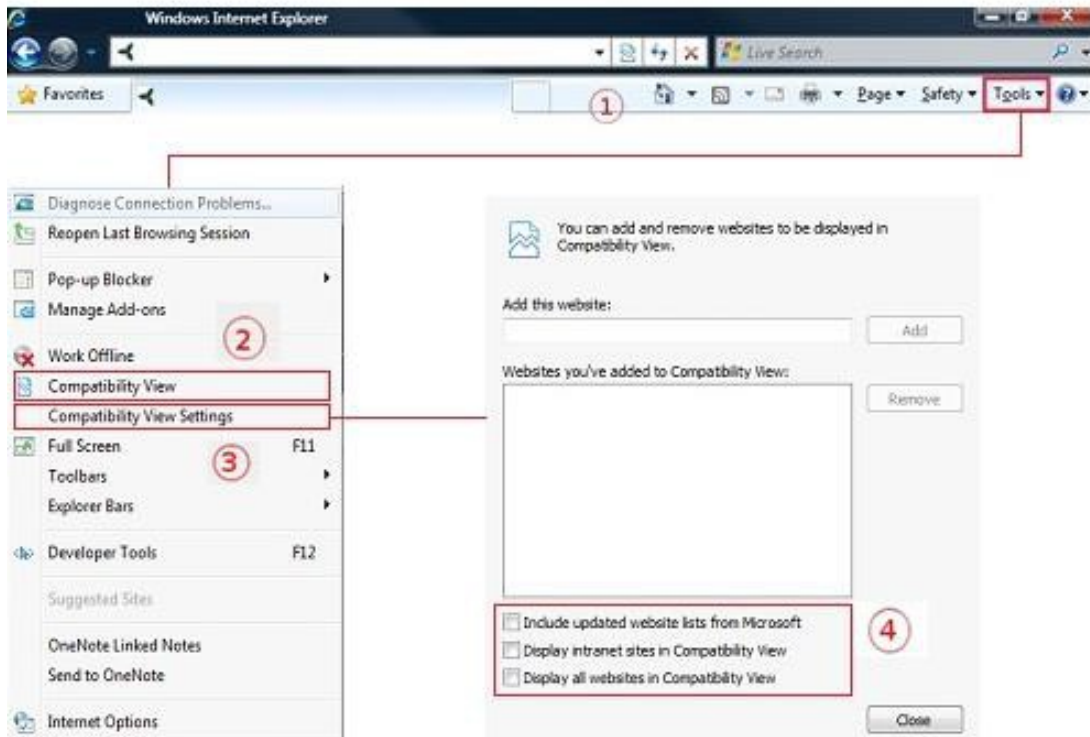
1. Select 'Tools'.
2. Select 'Internet Options'.
3. Select 'Privacy' tab.
4. Unselect 'Turn on Pop-up Blocker'.
5. Change the privacy slider to 'Medium High' (if the slider is not visible, select 'Default' first).

## 2.6 Printing settings (optional for best quality if printing results)



1. Press the 'Alt' key on your keyboard
2. Select 'File'
3. Select 'Page Setup...'
4. Select 'Print Background Colours and Images'
5. Choose '-Empty-' for all the optional fields under 'Headers and Footers'
6. Close all dialog boxes and restart your browser

## 2.7 Compatibility view settings



1. Select 'Tools'.
2. Ensure Compatibility View is displayed as per image above
3. Select 'Compatibility View Settings'
4. Ensure all boxes are Unselected

### 3. Client computer requirements

Any client computer intending to use the Test Platform must meet the following requirements:

- PC with 1.5ghz or higher processor clock speed recommended; Intel Pentium/Celeron family, or AMD K6/Athlon/Duron family, or compatible processor recommended.
- Screen resolution between 1024x768 and 1680x1050.
- At least 1 gigabyte (GB) of RAM.
- Audio output to headphones.
- 100kb/s or higher bandwidth per machine.

Please note that the Test Platform does not support extended desktops, and computers used for formal or high-stakes tests should only ever have a single monitor attached to them.

Flash Requirements (in addition to standard requirements):

- Adobe Flash player 11 or newer.
- 2.33GHz or faster x86-compatible processor, or Intel® Atom™ 1.6GHz or faster processor for netbooks.
- 128MB of graphics memory.

This applies if your system utilises Flash files, please check with your administrator. Please note these specifications are from the Adobe website, please check [www.adobe.com/support/flashplayer](http://www.adobe.com/support/flashplayer) for the most up to date version of their software, and its specifications.

PDF requirements (in additional to standard requirements):

- Adobe Reader 11 or newer.

This applies if your system utilises PDF files, please check with your administrator. Please note these specifications are from the Adobe website, please check [www.adobe.com/support/reader](http://www.adobe.com/support/reader) for the most up to date version of their software, and its specifications.