

**ESOL Skills for Life
Speaking and Listening Assessment – Entry Level 1**

Centre No.	Candidate Run No.
Centre Name	
Candidate Name	
Candidate Signature	

Instructions to candidates

Check that you have the correct paper.

Do not open the paper until you are told to do so.

Complete the information above.

Listen to the instructions.

Use **blue** or **black** ink. Do not use a pencil.

You must **not** use a dictionary.

There is ONE listening task and TWO speaking tasks.

You have up to **30 minutes** to finish the assessment.

DO NOT SPEAK DURING THE LISTENING TEST

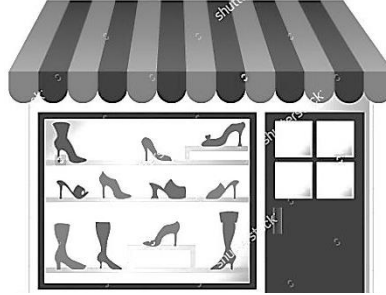
Task 1 **Listen to the people talking.**

1. **Where are the people?**

Tick the correct answer ✓



(a)



(b)



(c)

2. **What are they talking about?**

- (a) buying something
- (b) changing something
- (c) selling something

3. **What size jumper does the customer want?**

- (a) size 12
- (b) size 16
- (c) size 14

4. **How much extra does the customer have to pay?**

- (a) £2.00
- (b) £5.00
- (c) £10.00

Task 2

Instructions for the candidates

You will talk with another candidate and the Assessor about ordering food and drink for a classroom party.

You must ask questions

You can talk about....

- *How many people you want at the party*
- *The type of food you want*
- *The food you like and don't like*
- *The drinks you want*
- *How much money you want to spend*

Remember to take turns and speak clearly, give your opinions, ask and answer questions and listen carefully to the information and questions.



END OF ASSESSMENT

NOCN
Acero Building
1 Concourse Way
Sheaf Street
Sheffield
S1 2BJ

email: nocn@nocn.org.uk

Tel: 0300 999 1177